



श्री बाळासाहेब माने शिक्षण प्रसारक मंडळ अंबप
अशोकराव माने आयुर्वेदिक मेडिकल कॉलेज अँड हॉस्पिटल
वाठार तर्फ वडगाव, ता. हातकणंगले, जि.कोल्हापूर 416112.



Department of Rachana Sharir

HOD :- DR.SWARUP P. KULKARNI

M.D. , PhD. (Rachana Sharir)

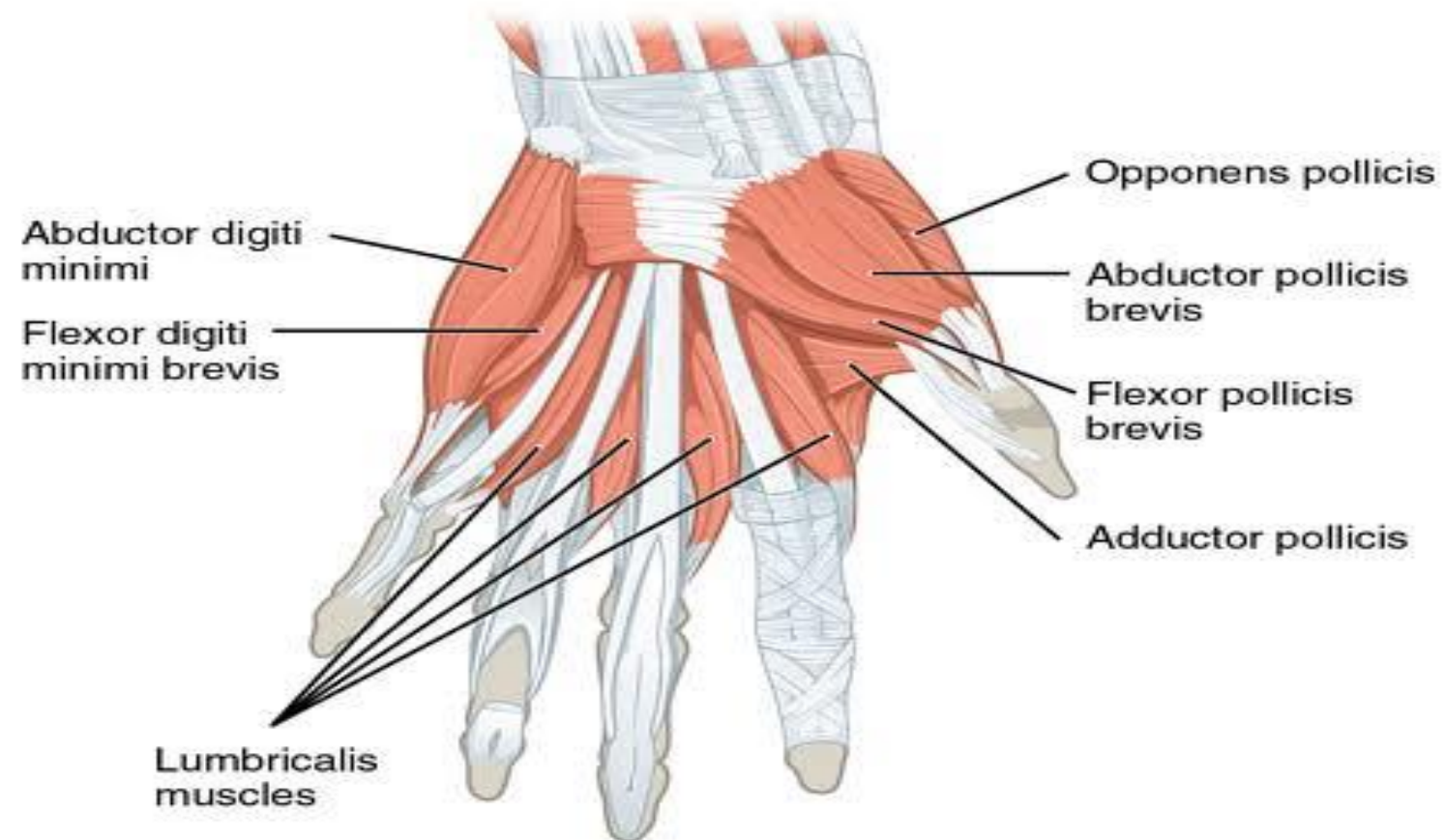
Assistant Professor :-DR.SUCHITRA DAS

M.D. (Rachana Sharir)

• **Presented by :-**

1. Sachin Hon
2. Madhura Jagadale
3. Pradnya Jagtap
4. Shreyash Kamalekar

INTRINSIC MUSCLES OF HAND



INTRINSIC MUSCLES OF HAND

A) Muscles of Thenar Eminence –

1. Abductor pollicis brevis -



Origin	Insertion	Nerve supply	Action	Blood supply
Tubercle of scaphoid, trapezium, flexor retinaculum	Base of proximal phalanx of thumb	Median nerve	Abduction of thumb	Superficial palmar branch of radial artery

Abductor Pollicis brevis

2. Flexor pollicis brevis -



Origin	Insertion	Nerve supply	Action	Blood supply
Flexor retinaculum, trapezoid and capitate bone	Base of proximal phalanx of thumb	Median nerve	Flexes metacarpophalangeal joint of thumb	Superficial palmar branch of radial artery

Flexor Pollicis brevis

3. Opponens Pollicis



Origin	Insertion	Nerve supply	Action	Blood supply
Flexor retinaculum	Lateral half of palmar surface of the shaft of metacarpal bone of thumb	Median nerve	Pulls thumb medially and forward across palm	Superficial palmar branch of radial artery

Opponens Pollicis

B) Adductor of Thumb -

1. Adductor Pollicis -



Origin	Insertion	Nerve supply	Action	Blood supply
Oblique head: base of second and third metacarpals Transverse head: Shaft of third metacarpals	Base of proximal phalanx of thumb on its medial aspect	Deep branch of ulnar nerve	Adduction of thumb	Deep palmar arterial arch

Adductor Pollicis

C) Muscles of Hypothenar Eminence -

1. Abductor digiti minimi -



Origin	Insertion	Nerve Supply	Action	Blood supply
Pisiform bone	Base of proximal phalanx of little finger	Deep branch of ulnar nerve	Abducts little finger	Ulnar artery

Abductor digiti minimi



Abductor digiti minimi

2. Flexor digiti minimi -



Origin	Insertion	Nerve supply	Action	Blood supply
Flexor retinaculum	Base of proximal phalanx of little finger	Deep branch of ulnar nerve	Flexes little finger	Ulnar artery

Flexor digiti mimimi



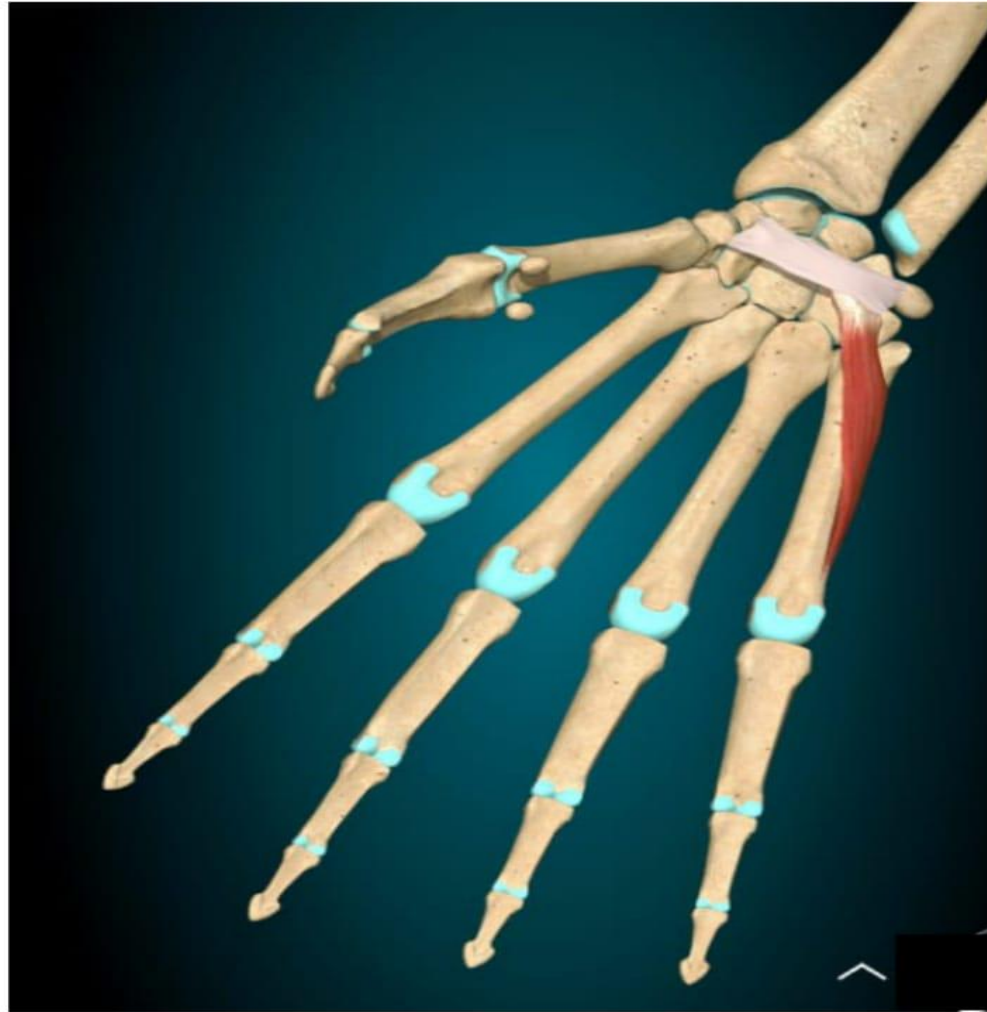
Flexor digiti minimi

3. Opponens digiti minimi -



Origin	Insertion	Nerve supply	Action	Blood supply
Flexor retinaculum	Medial border of fifth metacarpal bone	Deep branch of ulnar nerve	Pulls fifth metacarpal forward as in cupping the palm	Ulnar artery

Opponens digiti minimi



Opponens digiti minimi

D) Lumbricals -



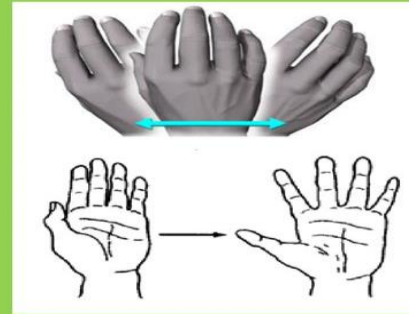
Origin	Insertion	Nerve supply	Action	Blood supply
First lateral side of tendon of flexor	Via expansion into dorsum of bases of distal phalanges	1 st and 2 nd i.e lateral by median nerve 3 rd and 4 th i.e deep branch of ulnar nerve	Flexor metacarpophalangeal joints Extends interphalangeal joint of 2 nd and 5 th digits	Superficial and Deep palmar arch

Lumbricals

Action -

AB-duction/AD-duction

- Wrist/Hand
 - Complex motion:
 - Radio-carpal jts
 - Intercarpal jts
 - Carpo-metacarpal jts
 - Digits
 - Reference is the 3rd digit



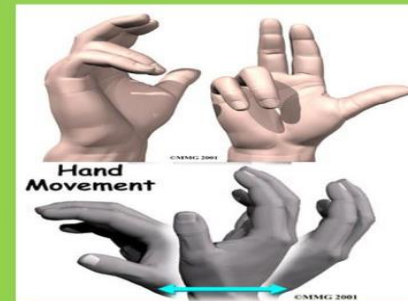
Opposition

- Distal ends of 1st and 5th digits brought together
 - Action is a combo of flexion and adduction
 - Primarily the 1st digit, lesser action of 5th



Flexion/Extension

- Wrist/Hand
 - Radio-carpal jts
 - Intercarpal jts
 - Carpo-metacarpal jts.
- Digits



Clinical Anatomy

The radial artery is used for feeling the (arterial) pulse at the wrist.

The pulsations can be felt well in this situation because of the presence of the flat radius behind the artery .

Thank you!